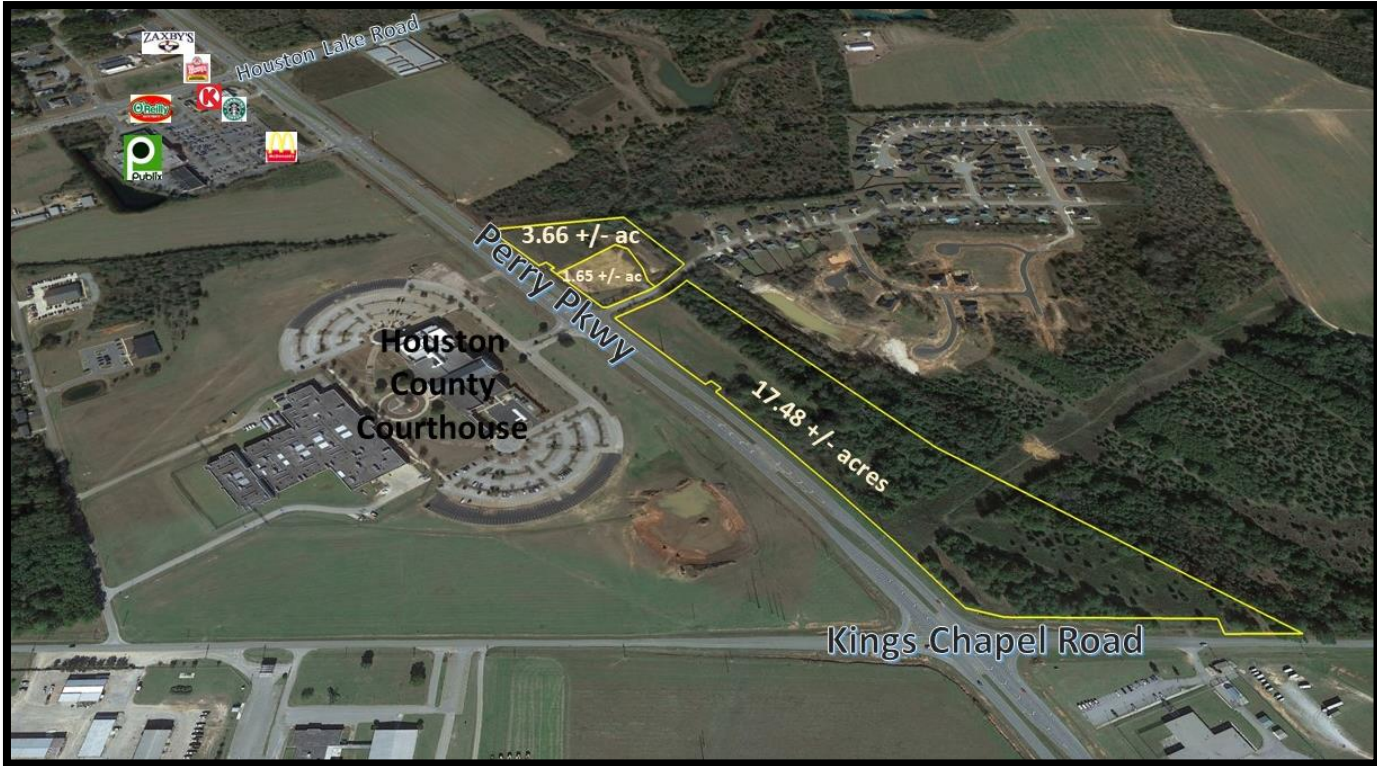


FOR SALE: 22.79 +/- acres
 Perry Parkway and Kings Chapel Road
 Perry, GA

The Bateman Group LLC.
 Commercial Real Estate
 Oliver C. Bateman III, Broker



- **Location:** 22.79 +/- acres located across from the Houston County Courthouse on Perry Parkway.
- **Zoning:** Commercial
- **High Growth Area**
- **1,600 feet of frontage on Perry Parkway**
- **Utilities:** Available

	1 mile	3 miles	5 miles
Population	2,791	16,454	35,547
Median Household Income	\$66,808	\$65,830	\$77,560

\$120,000/acre

Oliver C. Bateman, III
 Office: 478-745-0008
 Fax: 478-745-0009
 Cell: 478-972-6043
 oliver@thebatemangroup.com
 2885 Walden Road
 Macon, GA 31216



The Bateman Group LLC.
 Commercial Real Estate
 Oliver C. Bateman III, Broker

www.thebatemangroup.com

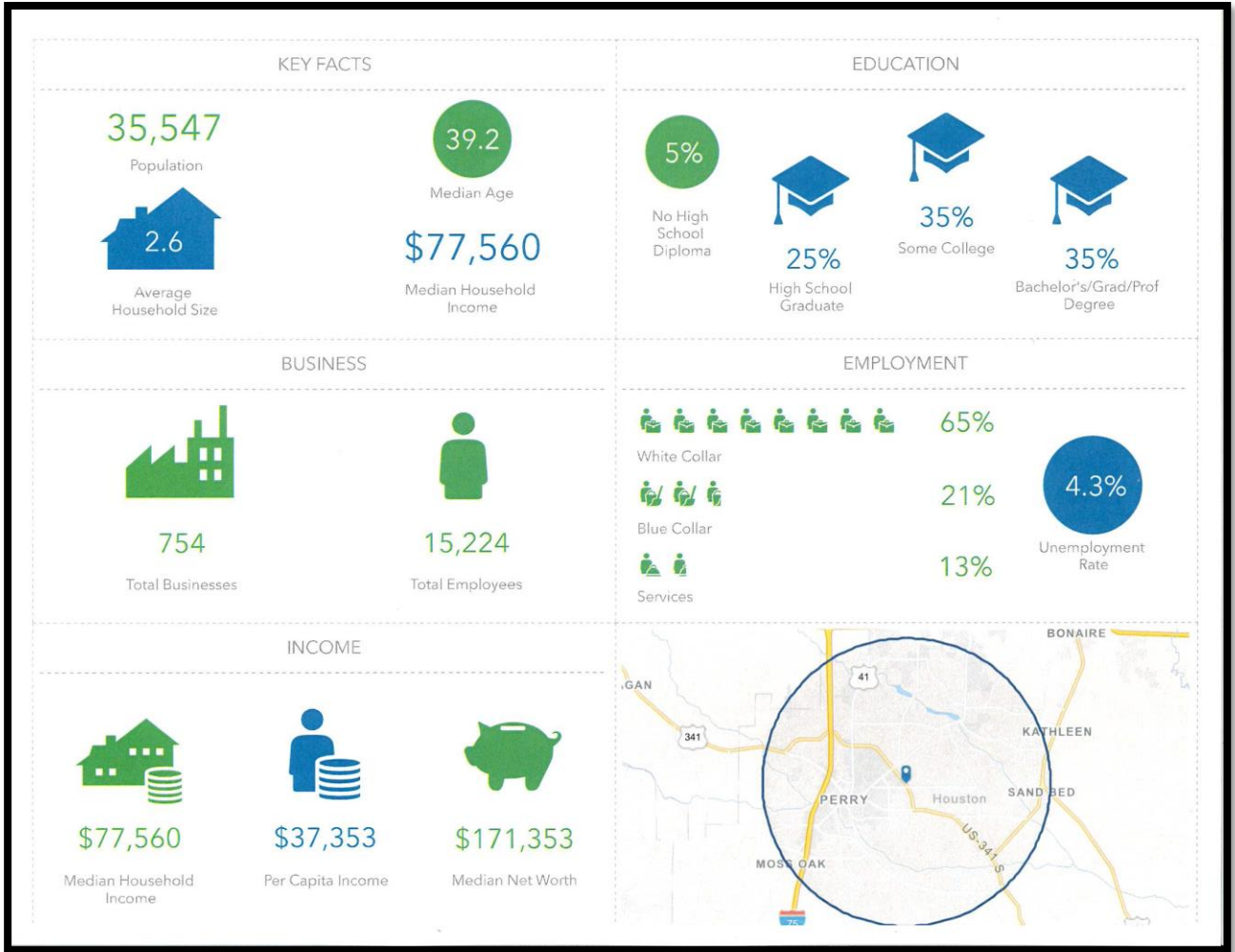
License no: 257399 Firm no: 56003

The above information is deemed reliable, but not guaranteed. It has been obtained from sources believed to be reliable; however, you are advised to verify this information through personal or professional inspections.

FOR SALE: 22.79 +/- acres
Perry Parkway and Kings Chapel Road
Perry, GA

The Bateman Group LLC.
Commercial Real Estate
Oliver C. Bateman III, Broker

5 mile Radius Key Facts



Oliver C. Bateman, III
 Office: 478-745-0008
 Fax: 478-745-0009
 Cell: 478-972-6043
 oliver@thebatemangroup.com
 2885 Walden Road
 Macon, GA 31216



The Bateman Group LLC.
Commercial Real Estate
Oliver C. Bateman III, Broker

www.thebatemangroup.com

License no: 257399 Firm no: 56003

The above information is deemed reliable, but not guaranteed. It has been obtained from sources believed to be reliable; however, you are advised to verify this information through personal or professional inspections.