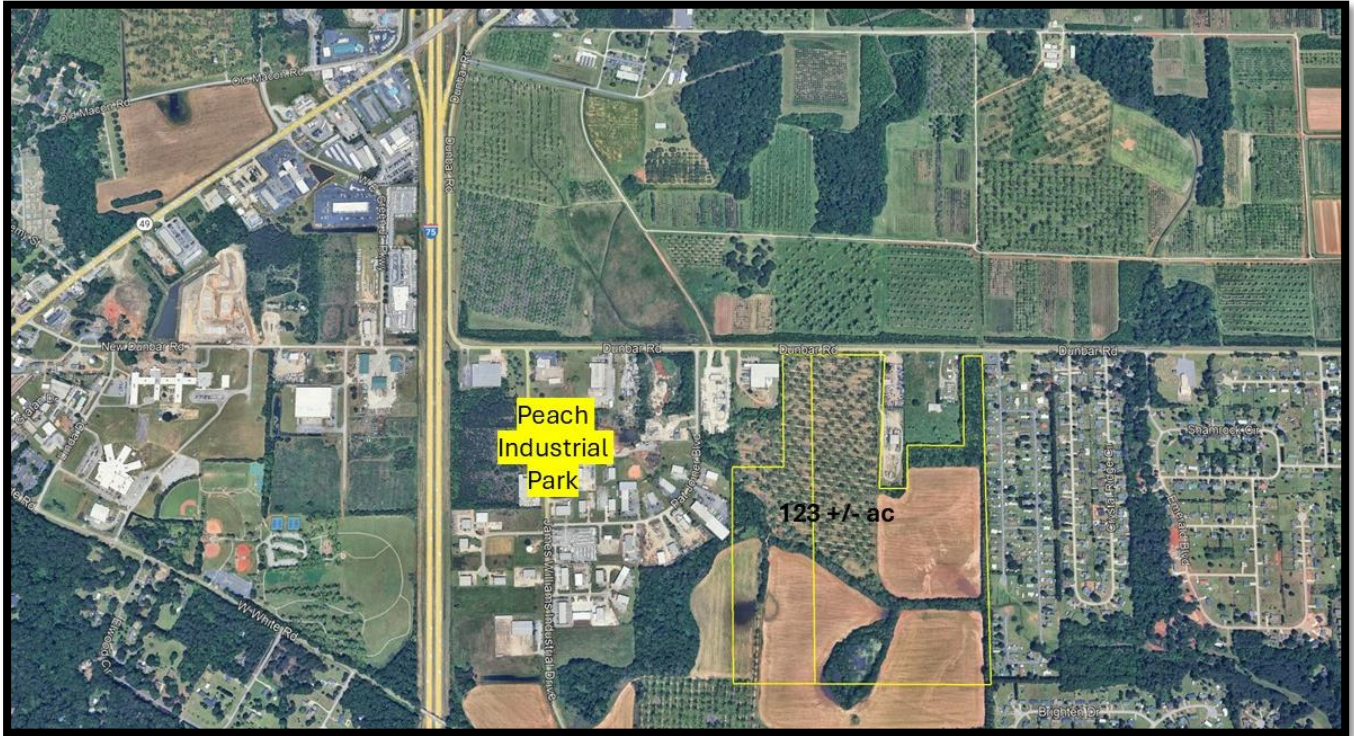


FOR SALE: 123 +/- acres  
Dunbar Road  
Byron, GA

**The Bateman Group LLC.**  
Commercial Real Estate  
Oliver C. Bateman III, Broker



- **Location:** 123 +/- acres located adjacent to the the Peach Industrial Park. This site has easy access to I-75 at the Byron exit.
- **Utilities:** available
- **Zoning:** Industrial
- **Topography:** flat

**\$40,000/acre**

Oliver C. Bateman, III  
Office: 478-745-0008  
Fax: 478-745-0009  
Cell: 478-972-6043  
oliver@thebatemangroup.com  
2885 Walden Road  
Macon, GA 31216



[www.thebatemangroup.com](http://www.thebatemangroup.com)

**The Bateman Group LLC.**  
Commercial Real Estate  
Oliver C. Bateman III, Broker

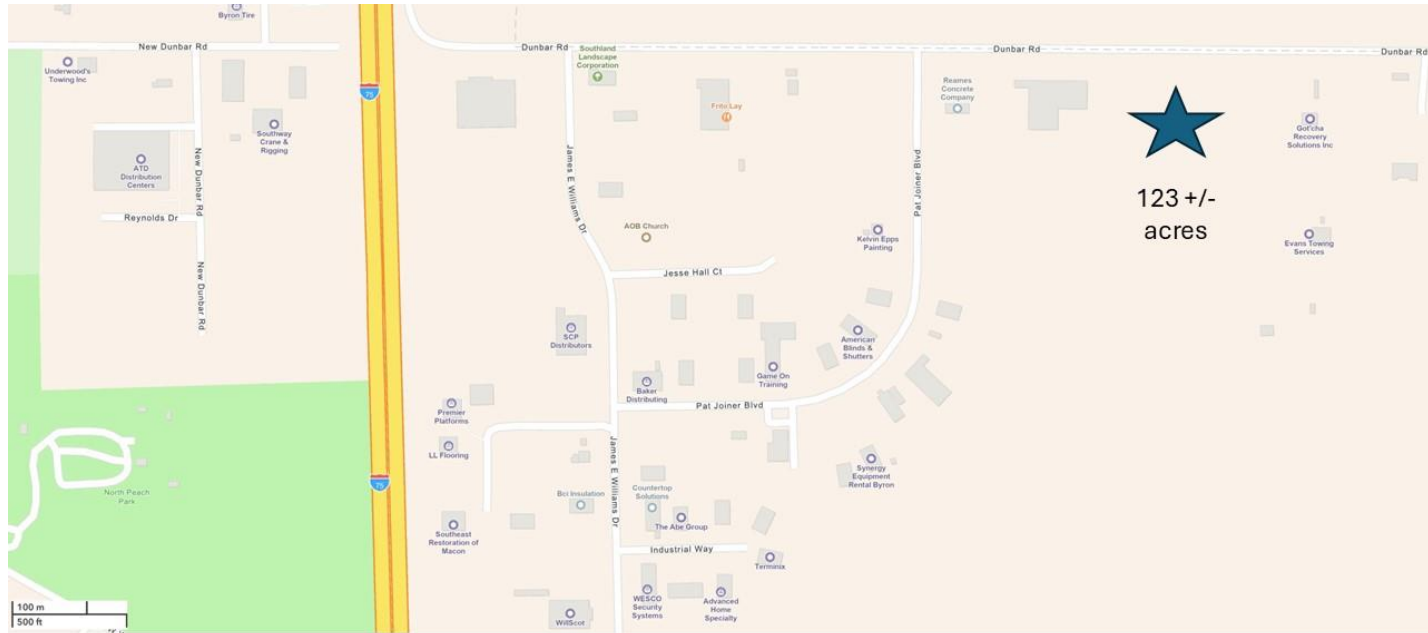
License no: 257399 Firm no: 56003

The above information is deemed reliable, but not guaranteed. It has been obtained from sources believed to be reliable; however, you are advised to verify this information through personal or professional inspections.

FOR SALE: 123 +/- acres  
Dunbar Road  
Byron, GA

**The Bateman Group LLC.**  
Commercial Real Estate  
Oliver C. Bateman III, Broker

## Peach Industrial Park



### Peach Industrial Park

The proximity to I-75 and the large cities of Macon and Warner Robins make this location ideal for many different businesses. Peach Industrial Park includes many service industry, distribution, local and national businesses. This 123 +/- ac site is zoned Industrial making it one of the few large industrial sites located in this area.

Oliver C. Bateman, III  
Office: 478-745-0008  
Fax: 478-745-0009  
Cell: 478-972-6043  
oliver@thebatemangroup.com  
2885 Walden Road  
Macon, GA 31216



**The Bateman Group LLC.**  
Commercial Real Estate  
Oliver C. Bateman III, Broker

[www.thebatemangroup.com](http://www.thebatemangroup.com)

License no: 257399 Firm no: 56003

The above information is deemed reliable, but not guaranteed. It has been obtained from sources believed to be reliable; however, you are advised to verify this information through personal or professional inspections.