

FOR SALE: 8.08 +/- acres
 Hwy 247
 Kathleen, GA

The Bateman Group LLC.
 Commercial Real Estate
 Oliver C. Bateman III, Broker



- Location: Hwy 247 in Kathleen, GA beside the Kathleen United States Post Office
- Close to Frito-Lay and adjacent to Taylor Regional Medical Building
- 690 +/- feet of frontage on State Hwy 247
- County Water
- Drive Cut approved

	1 mile	3 miles	5 miles
Population	981	11,935	35,467
Median Household Income	\$81,589	\$96,057	\$100,228

\$75,000/acre

Oliver C. Bateman, III
 Office: 478-745-0008
 Fax: 478-745-0009
 Cell: 478-972-6043
 oliver@thebatemangroup.com
 2885 Walden Road
 Macon, GA 31216



The Bateman Group LLC.
 Commercial Real Estate
 Oliver C. Bateman III, Broker

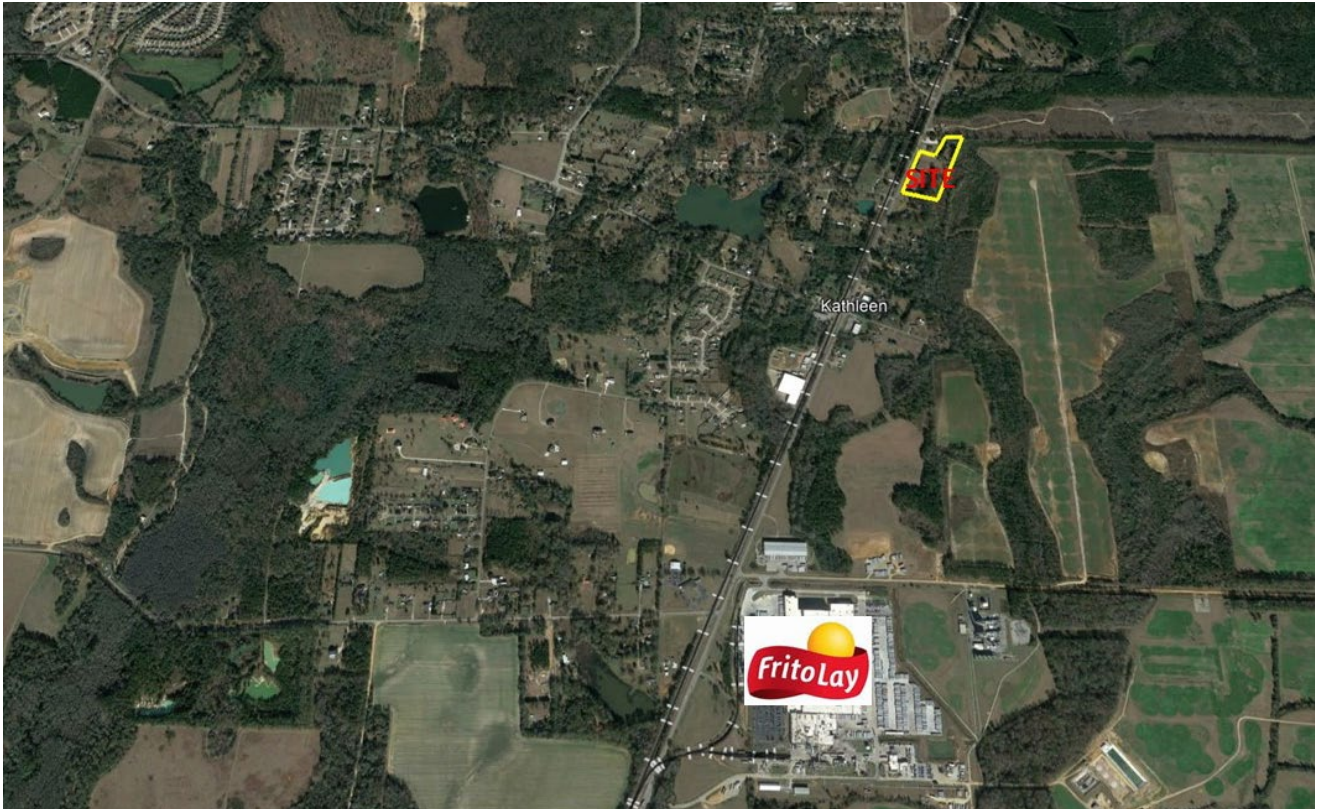
www.thebatemangroup.com

The above information is deemed reliable, but not guaranteed. It has been obtained from sources believed to be reliable; however, you are advised to verify this information through personal or professional inspections.

FOR SALE: 8.08 +/- acres
Hwy 247
Kathleen, GA

The Bateman Group LLC.
Commercial Real Estate
Oliver C. Bateman III, Broker

Location Map



Oliver C. Bateman, III
Office: 478-745-0008
Fax: 478-745-0009
Cell: 478-972-6043
oliver@thebatemangroup.com
2885 Walden Road
Macon, GA 31216



The Bateman Group LLC.
Commercial Real Estate
Oliver C. Bateman III, Broker

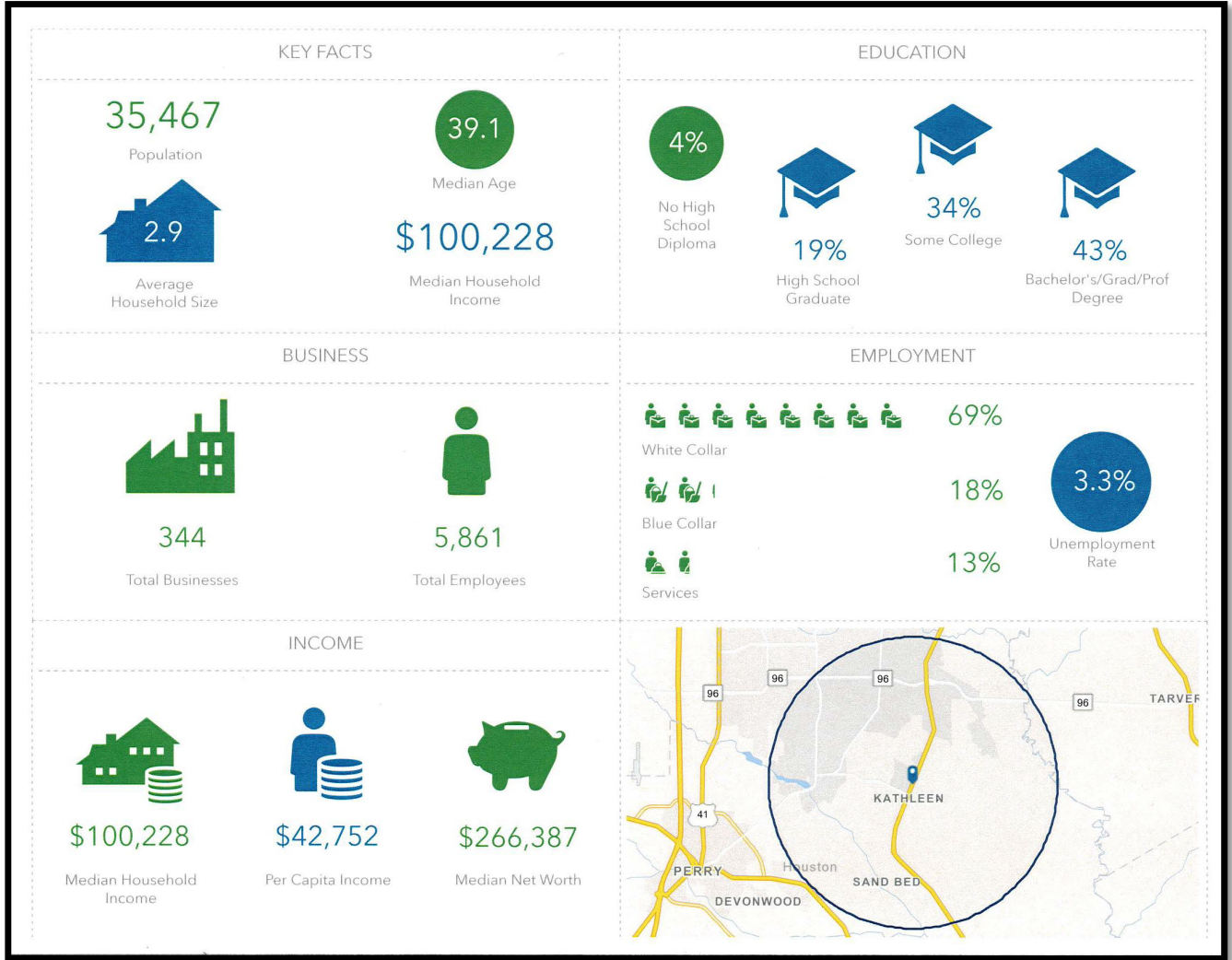
www.thebatemangroup.com

The above information is deemed reliable, but not guaranteed. It has been obtained from sources believed to be reliable; however, you are advised to verify this information through personal or professional inspections.

FOR SALE: 8.08 +/- acres
 Hwy 247
 Kathleen, GA

The Bateman Group LLC.
 Commercial Real Estate
 Oliver C. Bateman III, Broker

Key Facts 5 mile Radius



Oliver C. Bateman, III
 Office: 478-745-0008
 Fax: 478-745-0009
 Cell: 478-972-6043
 oliver@thebatemangroup.com
 2885 Walden Road
 Macon, GA 31216



www.thebatemangroup.com

The Bateman Group LLC.
 Commercial Real Estate
 Oliver C. Bateman III, Broker

The above information is deemed reliable, but not guaranteed. It has been obtained from sources believed to be reliable; however, you are advised to verify this information through personal or professional inspections.